

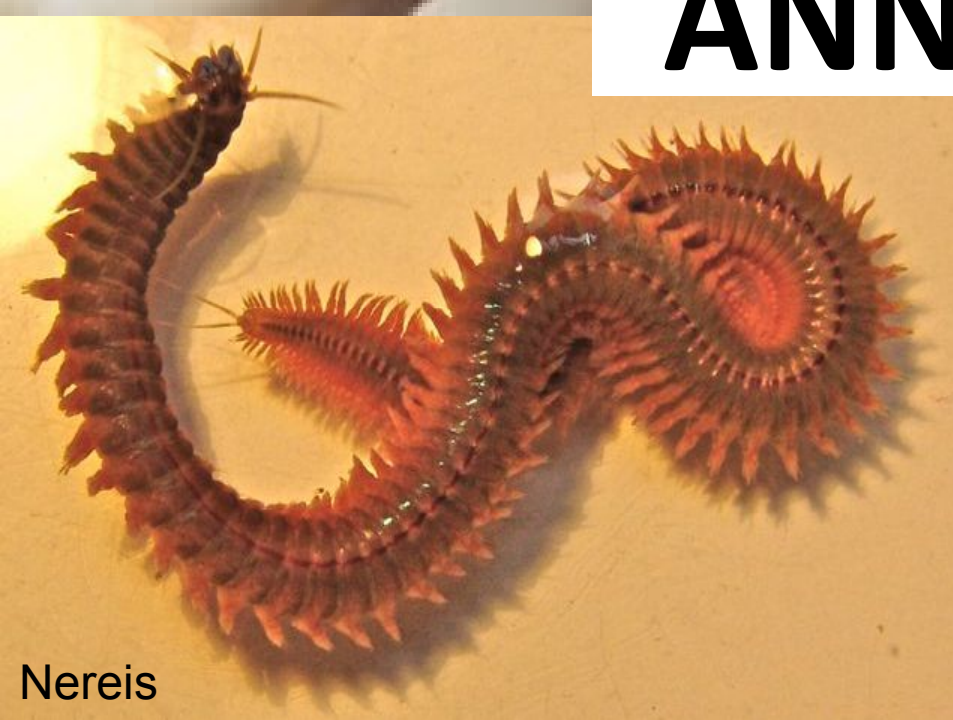


Hirudinaria



Pheretima

ANNELIDA

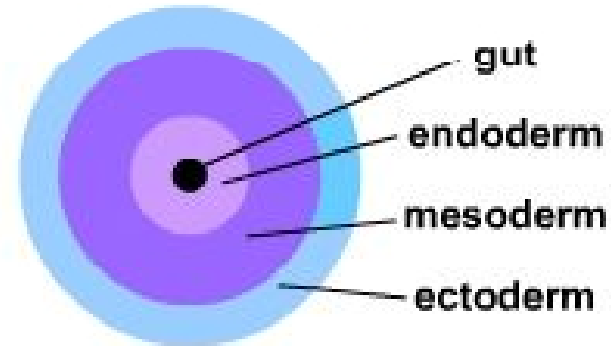


Nereis



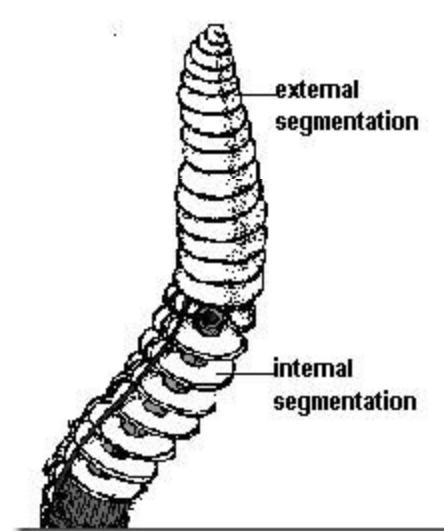
Chaetopterus

- Mostly aquatic, burrowing, living in tubes
- Triploblastic



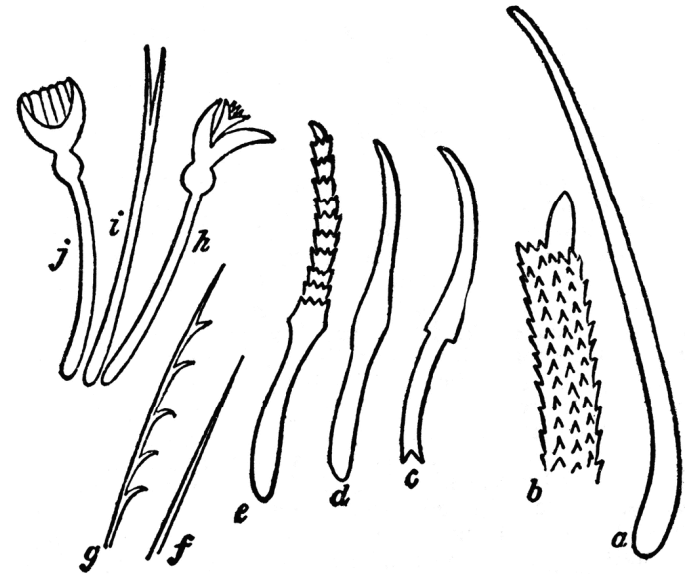
- Bilateral symmetry
- Elongated and vermiform

- Metamerically segmented

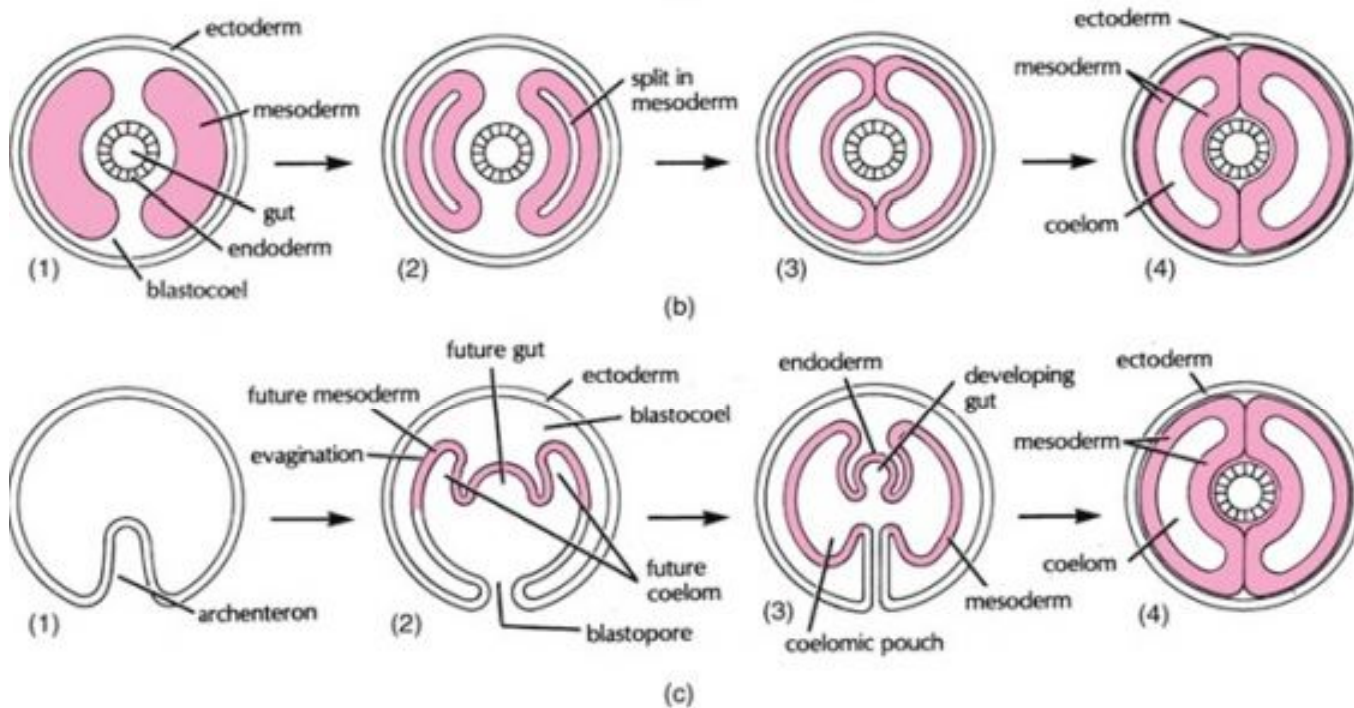


- Organ-system grade of organization
- Outer covering – cuticle secreted by epidermis

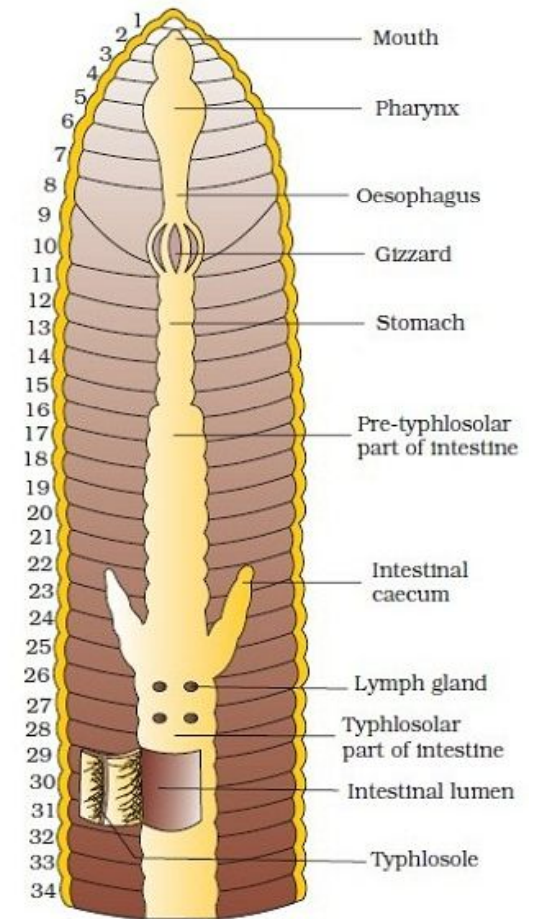
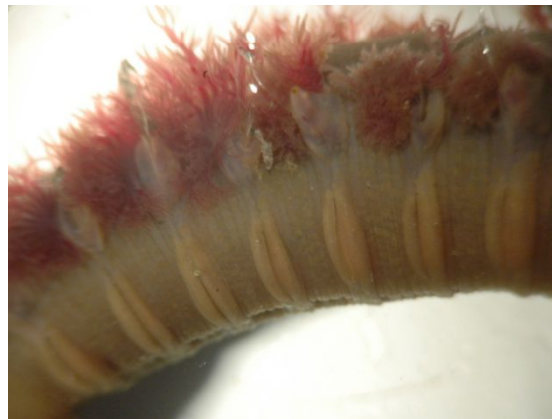
- Locomotory organs – paired setae in each segment



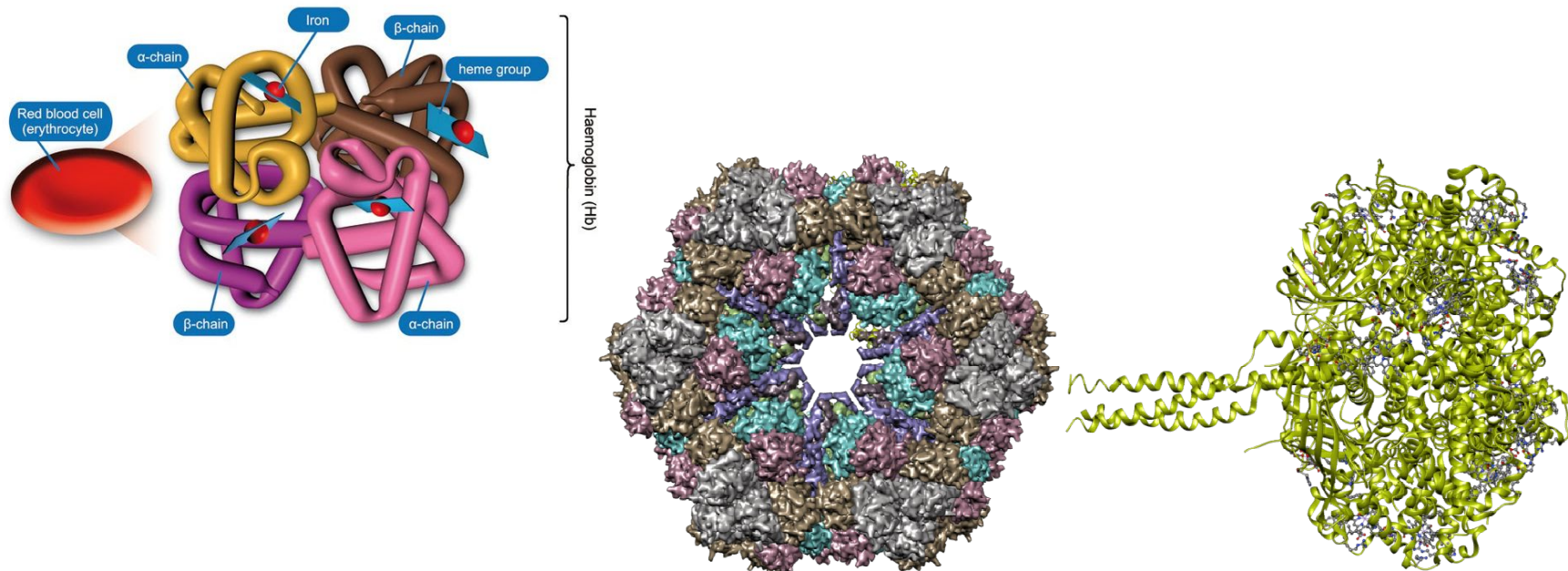
- Coelomate animals
- True schizocoelous coelom



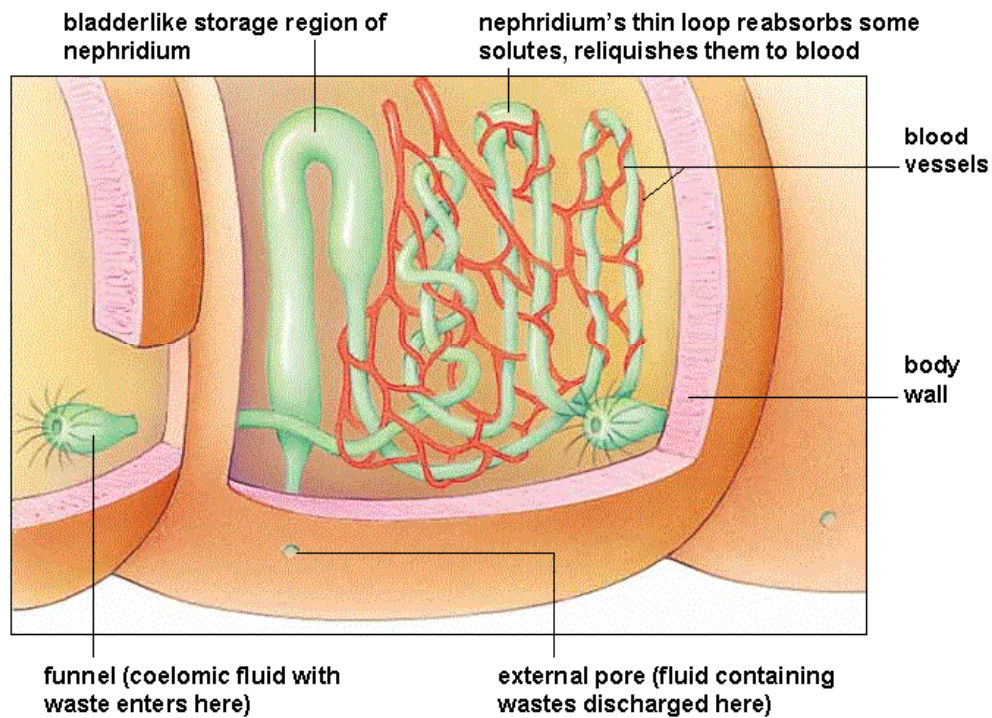
- Alimentary canal tube like
- Respiration: Body surface / Gills



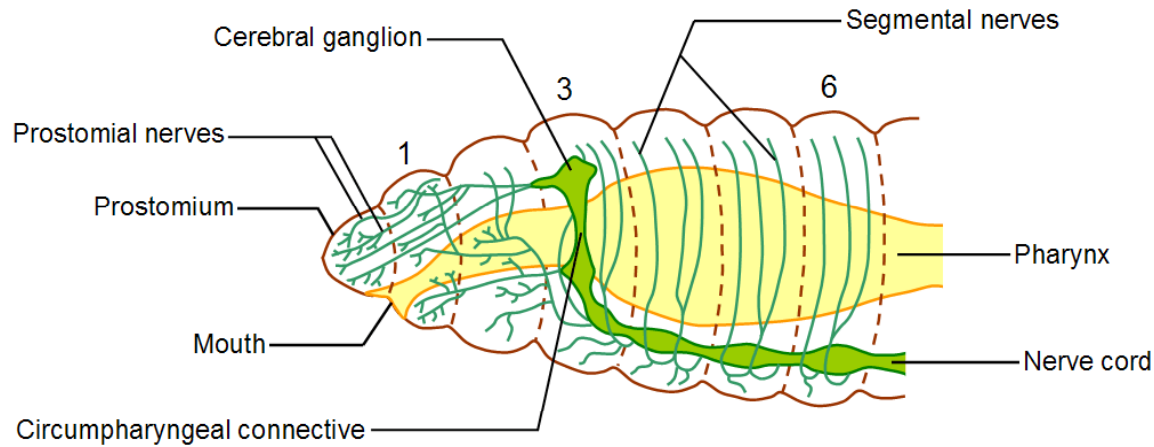
- Circulatory system: Closed type
- Blood pigments: Haemoglobin, Erythrocyruorin



- Excretion: Nephridia



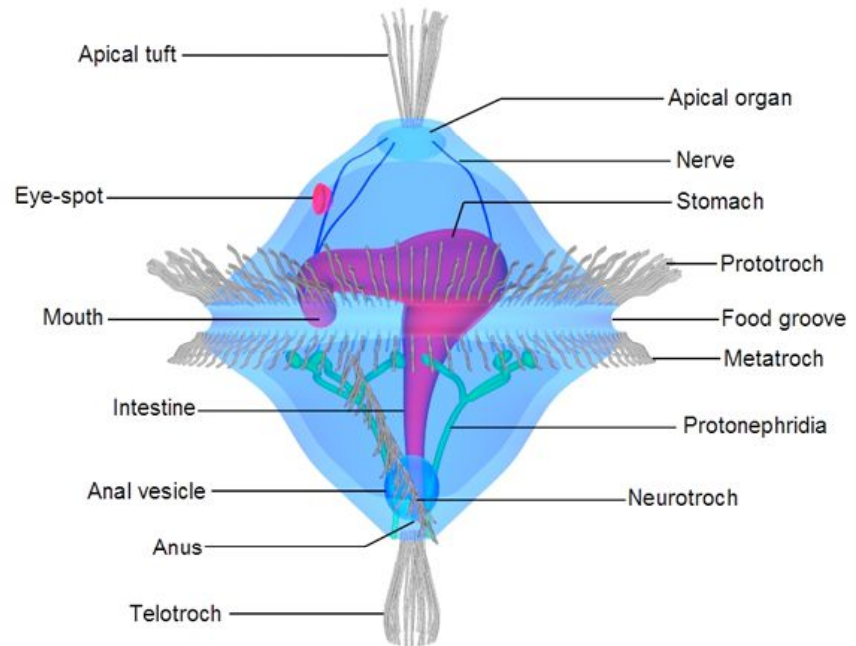
- Nervous system



- Sense organs: Tactile organs, taste buds, statocysts, eyes



- Monoecious forms – direct development
- Dioecious forms – indirect development
- Trocophore larva



CLASSIFICATION

- Polychaeta – many bristles
 - *Nereis*
- Oligochaeta – few setae
 - *Megascolex*
- Hirudinea – leech
 - *Hirudinaria*
- Archiannelida – first annelids

END